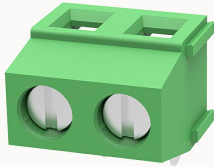


## Overview

### Product information



## DG127R-5.08-10040001468

PCB terminal blocks, Rated current: 15A, Rated voltage (III/2) 250V, Cross section: 0.75-1.5mm<sup>2</sup>, pitch: 5.08mm, connector method: Screw connector with tension sleeve, Color: green, Contact surface : Tin

### Product advantages

- Fixed screw connection technology, safe and reliable
- Different poles can be combined through the side lock
- Universal installation method to ensure a high degree of flexibility in device design

### Product certification



## Technical data

### Product drawing

### 3D model

□

### Processing notes

Process

Wave soldering/manual soldering

### Connection capacity

Conductor cross section solid	0.75~1.5mm <sup>2</sup>
Conductor cross section flexible	0.75~1.5mm <sup>2</sup>
AWG	26~14AWG
Torque	0.4N.m
Strip length	6mm

### Electrical parameters UL

Rated voltage (B)	300V
Rated current (B)	12A

#### Electrical parameters IEC

Rated voltage	250V
Rated current	15A
Rated current(III/2)	250V
Rated surge voltage(III/2)	2KV

#### Item properties

Connection direction	90°
Type of installation	PCB welding
Pin arrangement	Single row in a straight line
Connection method	Screw connection
Screwdriver	Slotted screwdriver
screw thread	M2.5
Pitch	5.08mm
Number of potentials	2
Pluggable or not	no
Number of rows	1

#### Material data

Environmental items	Compliant with REACH/RoHS
Contact material	Copper alloy
Contact point metal surface	tin-plated
Insulation Materials	PA66
Insulating material group	I
Flammability rating	UL94V-0

**Mechanical tests**

Test Specification

UL1059/IEC60998

**Environmental data**

Ambient temperature (operation)

-40°C~105°C

**Accessories****Accessories**

Coding strip

/

Bridge

DG019-5.0

Marking strip

/

Others

/

**Tool**

Operating tool

/

Screwdriver

0.6x3.5mm, Slotted screwdriver

**Business data**

Order number

10040001468

Packing unit

500

Minimum order quantity

30

Products weight (without packaging)

1.78