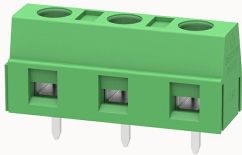


Overview

Product information



DG127-7.62-10040001004

PCB terminal blocks, Rated current: 15A, Rated voltage (III/2) 450V, Cross section: 0.75-1.5mm², pitch: 7.62mm, connector method: Screw connector with tension sleeve, Color: green, Contact surface : Tin

Product advantages

- Fixed screw connection technology, safe and reliable
- Different poles can be combined through the side lock
- Universal installation method to ensure a high degree of flexibility in device design

Product certification



Technical data

Product drawing

3D model

□

Processing notes

Process

Wave soldering/manual soldering

Connection capacity

Conductor cross section solid	0.75~1.5mm ²
Conductor cross section flexible	0.75~1.5mm ²
AWG	26~14AWG
Torque	0.5N.m
Strip length	6mm

Electrical parameters UL

Rated voltage (B)	300V
Rated current (B)	12A

Electrical parameters IEC

Rated voltage	450V
Rated current	15A
Rated current(III/2)	450V
Rated power frequency voltage(1min)	2.5KV

Item properties

Connection direction	0°
Type of installation	PCB welding
Pin arrangement	Single row in a straight line
Connection method	Screw connection
Screwdriver	Slotted screwdriver
screw thread	M3
Pitch	7.62mm
Number of potentials	3
Pluggable or not	no
Number of rows	1

Material data

Environmental items	Compliant with REACH/RoHS
Contact material	Copper alloy
Contact point metal surface	tin-plated
Insulation Materials	PA66
Insulating material group	I
Flammability rating	UL94V-0

Mechanical tests

Test Specification

UL1059/IEC60998

Environmental data

Ambient temperature (operation)

-40°C~105°C

Accessories

Accessories

Coding strip

/

Bridge

/

Marking strip

/

Others

/

Tool

Operating tool

/

Screwdriver

0.6x3.5mm, Slotted screwdriver

Business data

Order number

10040001004

Packing unit

300

Minimum order quantity

30

Products weight (without packaging)

3.19