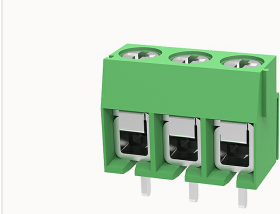


## Overview

### Product information



## DG126-5.0-10050000042

PCB terminal blocks, Rated current: 18A, Rated voltage (III/2) 250V, Cross section: 2.5mm<sup>2</sup>, pitch: 5.0mm, connector method: screw connector with wire protection, Color: green, Contact surface : Tin

### Product advantages

- Universal installation method to ensure a high degree of flexibility in device design
- Square wiring hole, large wiring capacity
- Different poles can be combined through the side lock

### Product certification



## Technical data

### Product drawing

### 3D model

□

### Processing notes

Process	Wave soldering/manual soldering
---------	---------------------------------

### Connection capacity

Conductor cross section solid	0.5~2.5mm <sup>2</sup>
Conductor cross section flexible	0.5~2.5mm <sup>2</sup>
AWG	26~14AWG
Torque	0.4N.m
Strip length	7mm

### Electrical parameters UL

Rated voltage (B)	300V
Rated current (B)	10A

#### Electrical parameters IEC

Rated voltage	250V
Rated current	18A
Rated current(III/2)	250V
Rated surge voltage(III/2)	2KV

#### Item properties

Connection direction	0°
Type of installation	PCB welding
Pin arrangement	Single row in a straight line
Connection method	Screw connection with wire protection
Screwdriver	Slotted screwdriver
screw thread	M2.6
Pitch	5mm
Number of potentials	3
Pluggable or not	no
Number of rows	1

#### Material data

Environmental items	Compliant with REACH/RoHS
Contact material	Copper alloy
Contact point metal surface	tin-plated
Insulation Materials	PA66
Insulating material group	I
Flammability rating	UL94V-0

### Mechanical tests

Test Specification

UL1059/IEC60998

### Environmental data

Ambient temperature (operation)

-40°C~105°C

## Accessories

### Accessories

Coding strip

/

Bridge

DG019-5.0

Marking strip

/

Others

/

### Tool

Operating tool

/

Screwdriver

0.6x3.5mm, Slotted screwdriver

## Business data

Order number

10050000042

Packing unit

#N/A

Minimum order quantity

30

Products weight (without packaging)

#N/A