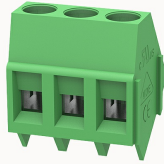


## Overview

### Product information



## DG103-5.0-10040000022

PCB terminal blocks, Rated current: 24A, Rated voltage (III/2) 250V, Cross section: 0.2~2.5mm<sup>2</sup>, pitch: 5.0mm, connector method: Screw connector with tension sleeve, Color: green, Contact surface : Tin

### Product advantages

- Universal installation method to ensure a high degree of flexibility in device design
- 45° connection can realize multi-row layout on PCB
- Different poles can be combined through the side lock

### Product certification



## Technical data

### Product drawing

### 3D model

□

### Processing notes

Process

Wave soldering/manual soldering

### Connection capacity

Conductor cross section solid	0.2~2.5mm <sup>2</sup>
Conductor cross section flexible	0.2~2.5mm <sup>2</sup>
AWG	24~12AWG
Torque	0.5N.m
Strip length	7mm

### Electrical parameters UL

Rated voltage (B)	300V
Rated voltage (D)	300V
Rated current (B)	20A
Rated current (D)	10A

#### Electrical parameters IEC

Rated voltage	250V
Rated current	24A
Rated current(III/2)	250V
Rated surge voltage(III/2)	2KV

#### Item properties

Connection direction	45°
Type of installation	PCB welding
Pin arrangement	Single row in a straight line
Connection method	Screw connection
Screwdriver	Slotted screwdriver
screw thread	M3
Pitch	5mm
Number of potentials	3
Pluggable or not	no
Number of rows	1

#### Material data

Environmental items	Compliant with REACH/RoHS
Contact material	Copper alloy
Contact point metal surface	tin-plated
Insulation Materials	PA66

Insulating material group	I
Flammability rating	UL94V-0

**Mechanical tests**

Test Specification	UL1059/IEC60998
--------------------	-----------------

**Environmental data**

Ambient temperature (operation)	-40°C~105°C
---------------------------------	-------------

**Accessories**

**Accessories**

Coding strip	/
Bridge	DG019-5.0
Marking strip	/
Others	/

**Tool**

Operating tool	/
Screwdriver	0.6x3.5mm, Slotted screwdriver

**Business data**

Order number	10040000022
Packing unit	250
Minimum order quantity	30
Products weight (without packaging)	4.4