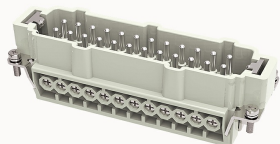


## Overview

### Product information



**DE-024-M-21020000040**

Heavy-duty insert, Number of contacts:24+PE, Dimension:24B, Rated voltage :500V, Rated current:16A, Male insert, Screw connector

### Product advantages

- Screw connection technology, applicable to a wide range of wire specifications;
- No need special tools, easy to operate;
- Less materials, easy to manage;
- With grounding protection.

### Product certification



## Technical data

### Product drawing

### 3D model

□

### Marking

classification	Insert
Series	DE

### versions

Connection method	Screw connection
Female/Male	Male
Dimension	24B
Number of positions	24
PE Contacts	Yes

### Material characteristics

Material (insert)	Polycarbonate (PC)
Material (Contact)	Copper alloy
Surface (Contact)	Silver plated
Flammability rating	V-0
color	Grey/White (RAL 7032)
RoHS	Comply with RoHS exemptions

### Electrical parameters

Rated current	16A
	500V
Rated pulse voltage	6KV
Pollution level	3
On the basis of UL /CSARated current	600V
Insulation resistance	$\geq 10000M\Omega$
Contact resistance	$\leq 1m\Omega$
Temperature range	-40°C~+125°C
working life-mating cycles	$\geq 500$ time
Strip length	7mm
Rated torque	0.5N.m
Conductor cross sections (mm <sup>2</sup> )	0.75-2.5mm <sup>2</sup>
Conductor cross sections(AWG)	18-14AWG

### Standards

Connection meets standards	DIN EN 60664 DIN EN 61984
----------------------------	---------------------------

### Accessories

Accessories

Screwdriver

/

#### Business data

Order number	2102000040
Packing unit	100
Minimum order quantity	5
Products weight (without packaging)	117.2