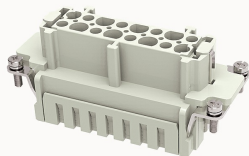


Overview

Product information



DE-016-FS-21020000116

Heavy-duty insert, Number of contacts: 16+PE, Dimension: 16B, Rated voltage :500V, Rated current: 16A, Female insert, Cage clamp connector

Product advantages

- Spring cage connection technology, high vibration resistance;
- No special tools required, maintenance-free ;
- Less materials, easy to manage;
- With grounding protection.

Product certification



Technical data

Product drawing

3D model

□

Marking

classification	Insert
Series	DE

versions

Connection method	Spring cage connection
Female/Male	Female
Dimension	16B
Number of positions	16
PE Contacts	Yes

Material characteristics

Material (insert)	Polycarbonate (PC)
Material (Contact)	Copper alloy
Surface (Contact)	Silver plated
Flammability rating	V-0
color	Grey/White (RAL 7032)
RoHS	Comply with RoHS exemptions

Electrical parameters

Rated current	16A
	500V
Rated pulse voltage	6KV
Pollution level	3
On the basis of UL /CSARated current	600V
Insulation resistance	$\geq 10000M\Omega$
Contact resistance	$\leq 1m\Omega$
Temperature range	-40°C~+125°C
working life-mating cycles	≥ 500 time
Strip length	7-9mm
Conductor cross sections (mm ²)	0.14-2.5mm ²
Conductor cross sections(AWG)	26-14AWG

Standards

Connection meets standards	DIN EN 60664 DIN EN 61984
----------------------------	---------------------------

Accessories

Accessories

Screwdriver

/

Business data

Order number	21020000116
Packing unit	100
Minimum order quantity	5
Products weight (without packaging)	89.4