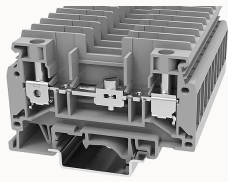


## Overview

### Product information



## DCTK6-11060000212

Screw type Din-Rail TB, connector method: Screw/plug-in connector, Rated voltage: 630 V, Rated current: 41 A, Number of connectors: 2, Number of potentials: 1, Cross section: 0.5 mm<sup>2</sup> - 6 mm<sup>2</sup>, AWG: 22 - 8, Width: 8 mm, Color: gray, Mounting type: NS 35/7.5, NS 35/15

### Product advantages

- Current terminal;
- Steel screw connection technology, reliable connection;
- The sliding block breaks, which can realize the circuit breaking function;
- The box has a baffle to prevent mis-insertion;
- Can be matched with marker strips to avoid incorrect insertion of wires.

### Product certification



## Technical data

### Product drawing

### 3D model

□

### Overview

Number of rows	1
number of connections	2
Open-end side panels	Yes
Insulation Materials	PA
Flame retardant grade, in line with UL 94	V0
Insulating material group	I
standard test	IEC60947-7-1

Connection method	screw connection
-------------------	------------------

#### Dimension

width	8mm
End plate width	1.5mm
Height	46.1mm
NS 35/7,5 Height	46.55mm
NS 35/15 Height	54.05mm
length	70.9mm

#### Wiring data

Strip length	10~11mm
Conductor cross section solid AWG	22~8
Conductor cross section solid	0.5~6mm <sup>2</sup>
Conductor cross section flexible	0.5~6mm <sup>2</sup>
Conductor cross section flexible (ferrule without plastic sleeve)	0.5-6mm <sup>2</sup>
Conductor cross section flexible (ferrule with plastic sleeve)	0.5-6mm <sup>2</sup>
2 flexible conductors with a TWIN ferrule	0.5-2.5mm <sup>2</sup>
Screw type	Slotted screw
screw thread	M4
Tightening torque	1.2N.m

#### IEC Electrical parameters

Rated voltage (III / 3)	630V
Rated current (III / 3)	41A
Rated surge voltage	8KV

#### UL Electrical parameters

Rated voltage	300V
Rated current	45A

#### Environmental conditions

Ambient temperature (operation)	-40 °C ~ 105 °C (depending on derating curve)
Relative humidity (storage/transport)	25%~75%
Ambient temperature (storage / transport)	-25°C~60°C

#### Mechanical performance test

Mechanical strength	Passed the test
Fixing support	Passed the test
Rotational Pull Test	Passed the test

#### Electrical performance test

Voltage drop	≤3.2mV
Temperature rise test	≤45 K

#### Safety test

Anti-finger touch	Passed the test
-------------------	-----------------

#### Environmental protection

RoHS	No excessive harmful substances
REACH SVHC	Lead 7439-92-1

#### Accessories

##### Marker

Top marker	/
Side marker	ZB8
Marker support	/

##### Accessories

Slotted screwdriver size (Blade thickness x Width)	1×4
Bridge	FBRI6-RTK/S-XXP
End cover	D-DCTK6
Partition plate	/

#### Installation

End clamp	E-WS N / E-PC-1100A
Terminal strip marker support	KLM3-20x8 / KLM3-44x8 / DLM2 / DBE-1 / DBE-2
DIN rail	NS35/7.5 & NS35/15

#### Marking & Installation

Marking strip	ZB8
Marker cards	DBE-1

#### Accessories

End cover	D-DCTK6
Bridge	FBRI6-RTK/S
End clamp	E-WS
DIN rail	NS35/7.5-1000-00A(H)

#### Business data

Order number	11060000212
Packing unit	50
Minimum order quantity	50
Products weight (without packaging)	19.027