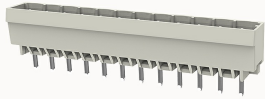


## Overview

### Product information



## 8EDGVC-5.08-10030002930

Pluggable terminal blocks, Rated current: 20A, Rated voltage (III/3) : 320V, pitch: 5.08mm, Color: gray, Contact surface : Tin

### Product advantages

- Universal installation method to ensure a high degree of flexibility in device design
- The plug direction is perpendicular to PCB

### Product certification



## Technical data

### Product drawing

### 3D model

□

### Processing notes

Process

Wave soldering/manual soldering

### Electrical parameters UL

Rated voltage (B)	300V
Rated voltage (C)	300V
Rated voltage (D)	300V
Rated current (B)	15A
Rated current (D)	10A
Rated current (C)	15A

### Electrical parameters IEC

Rated voltage	320V
Rated current(III/3)	320V
Rated current	20A
Rated surge voltage(III/3)	4KV

#### Item properties

Connection direction	90°
Type of installation	PCB welding
Pin arrangement	Single row in a straight line
Pitch	5.08mm
Number of potentials	12
Pluggable or not	Yes
Number of rows	1

#### Material data

Environmental items	Compliant with REACH/RoHS
Contact material	copper
Contact point metal surface	tin-plated
Contact zone metal surface	tin-plated
Insulation Materials	PA66
Insulating material group	I
Flammability rating	UL94V-0

#### Mechanical tests

Test Specification	IEC61984/ UL1059
--------------------	------------------

#### Environmental data

Ambient temperature (operation)	-40°C~105°C
---------------------------------	-------------

## Accessories

### Tool

Screwdriver	/
Operating tool	/

### Accessories

Coding strip	DG014
Bridge	/
Marking strip	/
Others	/

## Business data

Order number	10030002930
Packing unit	530
Minimum order quantity	30
Products weight (without packaging)	4.34