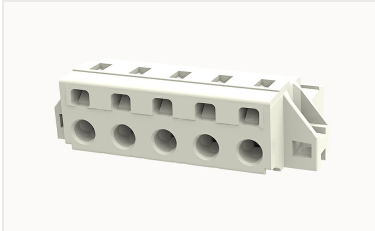


## Overview

### Product information



## 8EDGKRMA-7.5-10020001770

Pluggable terminal blocks, Rated current: 20A. Rated voltage (III/2) : 400V, pitch: 7.5mm, Color: gray, Contact surface : Tin

### Product advantages

- Adapt to multi-type plugs, device design is highly flexible
- Cage clamp connection technology, fast wiring
- Universal installation method, suitable for various situations

### Product certification



## Technical data

### Product drawing

### 3D model

□

### Connection capacity

Conductor cross section solid	0.2~2.5mm <sup>2</sup>
Conductor cross section flexible	0.2~2.5mm <sup>2</sup>
AWG	22~14AWG
Strip length	9mm

### Electrical parameters UL

Rated voltage (B)	300V
Rated voltage (D)	300V
Rated current (B)	15A
Rated current (D)	10A

## Electrical parameters IEC

Rated voltage	400V
Rated current	20A
Rated current(III/2)	400V
Rated surge voltage(III/2)	4KV

## Item properties

Connection direction	0°
Type of installation	panel
Pin arrangement	Single row in a straight line
Connection method	spring-cage connection
Pitch	7.5mm
Number of potentials	5
Pluggable or not	Yes
Number of rows	1

## Material data

Environmental items	Compliant with REACH/RoHS
Contact material	copper
Contact point metal surface	tin-plated
Contact zone metal surface	tin-plated
Insulation Materials	PA66
Insulating material group	I
Flammability rating	UL94V-0

## Mechanical tests

Test Specification	IEC61984/ UL1059
--------------------	------------------

## Environmental data

Ambient temperature (operation)

-40°C~105°C

#### Accessories

##### Tool

Screwdriver

/

Operating tool

DG010

##### Accessories

Coding strip

/

Bridge

DG018-7.5

Marking strip

/

Others

/

#### Business data

Order number

10020001770

Packing unit

200

Minimum order quantity

30

Products weight (without packaging)

11.5