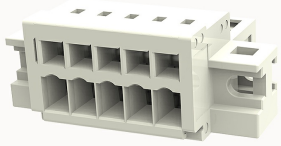


Overview

Product information

**8EDGKRM-3.5-10020001500**

Pluggable terminal blocks, Rated current: 10A. Rated voltage (III/3) : 130V, pitch: 3.5mm, Color: gray, Contact surface : Tin

Product advantages

- Adapt to multi-type plugs, device design is highly flexible
- Cage clamp connection technology, fast wiring
- Universal installation method, suitable for various situations

Product certification



Technical data

Product drawing

3D model

□

Connection capacity

Conductor cross section solid	0.2~1.5mm ²
Conductor cross section flexible	0.2~1.5mm ²
AWG	28~14AWG
Strip length	6mm

Electrical parameters UL

Rated voltage (B)	300V
Rated voltage (D)	300V
Rated current (B)	10A
Rated current (D)	10A

Electrical parameters IEC

Rated voltage	130V
Rated current(III/3)	130V
Rated current	10A
Rated surge voltage(III/3)	2.5KV

Item properties

Connection direction	0°
Type of installation	panel
Pin arrangement	Single row in a straight line
Connection method	spring-cage connection
Pitch	3.5mm
Number of potentials	5
Pluggable or not	Yes
Number of rows	1

Material data

Environmental items	Compliant with REACH/RoHS
Contact material	copper
Contact point metal surface	tin-plated
Contact zone metal surface	tin-plated
Insulation Materials	PA66
Insulating material group	I
Flammability rating	UL94V-0

Mechanical tests

Test Specification	IEC61984/ UL1059
--------------------	------------------

Environmental data

Ambient temperature (operation)

-40°C~105°C

Accessories

Tool

Screwdriver

/

Operating tool

/

Accessories

Coding strip

/

Bridge

/

Marking strip

/

Others

/

Business data

Order number

10020001500

Packing unit

480

Minimum order quantity

30

Products weight (without packaging)

4.6