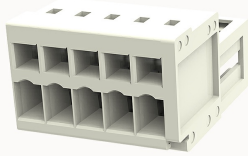


## Overview

## Product information

**8EDGKR-3.5-10020001407**

Pluggable terminal blocks, Rated current: 10A. Rated voltage (III/2) : 150V, pitch: 3.5mm, Color: gray, Contact surface : Tin

## Product advantages

- Adapt to multi-type plugs, device design is highly flexible
- Cage clamp connection technology, fast wiring
- Universal installation method, suitable for various situations

## Product certification



## Technical data

## Product drawing

## 3D model

□

## Connection capacity

Conductor cross section solid	0.2~1.5mm <sup>2</sup>
Conductor cross section flexible	0.2~1.5mm <sup>2</sup>
AWG	28~14AWG
Strip length	10mm

## Electrical parameters UL

Rated voltage (B)	300V
Rated voltage (D)	300V
Rated current (B)	10A
Rated current (D)	10A

## Electrical parameters IEC

Rated voltage	130V
Rated current	10A
Rated current(III/2)	130V
Rated surge voltage(III/2)	3KV

## Item properties

Connection direction	0°
Pin arrangement	Single row in a straight line
Connection method	spring-cage connection
Pitch	3.5mm
Number of potentials	5
Pluggable or not	Yes
Number of rows	1

## Material data

Environmental items	Compliant with REACH/RoHS
Contact material	copper
Contact point metal surface	tin-plated
Contact zone metal surface	tin-plated
Insulation Materials	PA66
Insulating material group	I
Flammability rating	UL94V-0

## Mechanical tests

Test Specification	IEC61984/ UL1059
--------------------	------------------

## Environmental data

Ambient temperature (operation)	-40°C~105°C
---------------------------------	-------------

## Accessories

### Tool

Screwdriver	/
-------------	---

Operating tool	/
----------------	---

### Accessories

Coding strip	/
--------------	---

Bridge	/
--------	---

Marking strip	/
---------------	---

Others	/
--------	---

## Business data

Order number	10020001407
--------------	-------------

Packing unit	600
--------------	-----

Minimum order quantity	30
------------------------	----

Products weight (without packaging)	4.5
-------------------------------------	-----