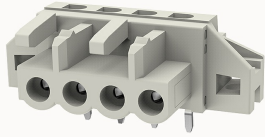


Overview

Product information



8EDGCM-5.0-10020002856

Pluggable terminal blocks, Rated current:20A, Rated voltage (III/3) :320V, pitch:5.0mm, Color:gray, Contact surface :Tin

Product advantages

- PCB welding, plug direction is parallel to the PCB
- Provides anti-touch protection for connection

Product certification



Technical data

Product drawing

3D model

□

Connection capacity

Strip length

6mm

Electrical parameters UL

Rated voltage (B)

300V

Rated voltage (D)

300V

Rated current (B)

15A

Rated current (D)

10A

Electrical parameters IEC

Rated voltage

320V

Rated current(III/3)

320V

Rated current	20A
Rated surge voltage(III/3)	4KV

Item properties

Connection direction	0°
Connection method	spring-cage connection
Pitch	5mm
Number of potentials	4
Pluggable or not	Yes
Number of rows	1

Material data

Environmental items	Compliant with REACH/RoHS
Contact material	copper
Contact point metal surface	tin-plated
Contact zone metal surface	tin-plated
Insulation Materials	PA66
Insulating material group	I
Flammability rating	UL94V-0

Mechanical tests

Test Specification	IEC61984/ UL1059
--------------------	------------------

Environmental data

Ambient temperature (operation)	-40°C~105°C
---------------------------------	-------------

Accessories

Accessories

Coding strip	/
--------------	---

Bridge	/
Marking strip	/
Others	/

Tool

Operating tool	/
Screwdriver	/

Business data

Order number	10020002856
Packing unit	360
Minimum order quantity	30
Products weight (without packaging)	4.3