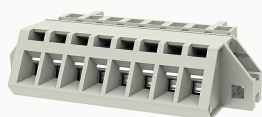


Overview

Product information



8EDG-STDBM-5.0-10020001540

Pluggable terminal blocks, Rated current: 20A, Rated voltage (III/2) : 320V, pitch: 5.0mm, Color: gray, Contact surface : Tin

Product advantages

- Can achieve 90° transfer connection
- Cage clamp connection technology, fast wiring
- Panel or through-wall mounting, suitable for various situations

Product certification



Technical data

Product drawing

3D model

□

Connection capacity

Conductor cross section solid	0.2~2.5mm ²
Conductor cross section flexible	0.2~2.5mm ²
AWG	22~14AWG
Strip length	7mm

Electrical parameters UL

Rated voltage (B)	300V
Rated current (B)	15A

Electrical parameters IEC

Rated voltage	320V
---------------	------

Rated current	20A
Rated current(III/2)	320V
Rated surge voltage(III/2)	4KV

Item properties

Connection direction	45°
Pin arrangement	Single row in a straight line
Pitch	5mm
Number of potentials	8
Pluggable or not	Yes
Number of rows	1

Material data

Environmental items	Compliant with REACH/RoHS
Contact material	Copper alloy
Contact point metal surface	tin-plated
Contact zone metal surface	tin-plated
Insulation Materials	PA66
Insulating material group	I
Flammability rating	UL94V-0

Mechanical tests

Test Specification	IEC61984/ UL1059
--------------------	------------------

Environmental data

Ambient temperature (operation)	-40°C~105°C
---------------------------------	-------------

Tool

Screwdriver	/
Operating tool	/

Accessories

Coding strip	/
Bridge	DG018-5.0
Marking strip	/
Others	/

Business data

Order number	10020001540
Packing unit	210
Minimum order quantity	30
Products weight (without packaging)	13.57