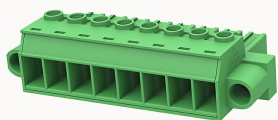


## Overview

### Product information



## 5EDGKHM-7.62-10010004410

Pluggable terminal blocks, Rated current:41A. Rated voltage (III/2) :1000V, pitch:7.62mm, Color:green, Contact surface :Tin

### Product advantages

- Adapt to multi-type sockets, device design is highly flexible
- Keying parts can be installed
- Universal installation method, suitable for various situations

### Product certification



## Technical data

### Product drawing

### 3D model

□

### Connection capacity

|                                  |                        |
|----------------------------------|------------------------|
| Conductor cross section solid    | 0.5~6mm <sup>2</sup>   |
| Conductor cross section flexible | 0.5~6.0mm <sup>2</sup> |
| Torque                           | 0.8N.m                 |
| Strip length                     | 11mm                   |

### Electrical parameters UL

|                   |      |
|-------------------|------|
| Rated voltage (B) | 600V |
| Rated voltage (C) | 600V |
| Rated voltage (D) | 600V |
| Rated current (B) | 41A  |

|                   |     |
|-------------------|-----|
| Rated current (D) | 5A  |
| Rated current (C) | 41A |

#### Electrical parameters IEC

|                            |       |
|----------------------------|-------|
| Rated voltage              | 1000V |
| Rated current(III/3)       | 1000V |
| Rated current              | 41A   |
| Rated current(III/2)       | 1000V |
| Rated current(II/2)        | 1000V |
| Rated surge voltage(III/3) | 8KV   |
| Rated surge voltage(III/2) | 8KV   |
| Rated surge voltage(II/2)  | 6KV   |

#### Item properties

|                      |                              |
|----------------------|------------------------------|
| Connection direction | 0°                           |
| Screwdriver          | slotted-phillips screwdriver |
| screw thread         | M3                           |
| Pitch                | 7.62mm                       |
| Number of potentials | 8                            |
| Pluggable or not     | Yes                          |
| Number of rows       | 1                            |

#### Material data

|                             |                           |
|-----------------------------|---------------------------|
| Environmental items         | Compliant with REACH/RoHS |
| Contact material            | copper                    |
| Contact point metal surface | tin-plated                |
| Insulation Materials        | PA66                      |
| Insulating material group   | I                         |

|                     |         |
|---------------------|---------|
| Flammability rating | UL94V-0 |
|---------------------|---------|

Mechanical tests

|                    |                  |
|--------------------|------------------|
| Test Specification | IEC61984/ UL1059 |
|--------------------|------------------|

Environmental data

|                                 |             |
|---------------------------------|-------------|
| Ambient temperature (operation) | -40°C~105°C |
|---------------------------------|-------------|

Accessories

Tool

|                |   |
|----------------|---|
| Screwdriver    | / |
| Operating tool | / |

Accessories

|               |   |
|---------------|---|
| Coding strip  | / |
| Bridge        | / |
| Marking strip | / |
| Others        | / |

Business data

|                                     |             |
|-------------------------------------|-------------|
| Order number                        | 10010004410 |
| Packing unit                        | 60          |
| Minimum order quantity              | 30          |
| Products weight (without packaging) | 35          |