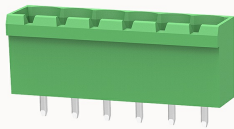


## Overview

### Product information



## 2EDGVC-5.0-10030002306

Pluggable terminal blocks, Rated current: 20A, Rated voltage (III/2) : 320V, pitch: 5.0mm, Color: green, Contact surface : Tin

### Product advantages

- Universal installation method to ensure a high degree of flexibility in device design
- The plug direction is perpendicular to PCB

### Product certification



## Technical data

### Product drawing

### 3D model

□

### Processing notes

Process	Wave soldering/manual soldering
---------	---------------------------------

### Electrical parameters UL

Rated voltage (B)	300V
Rated voltage (D)	300V
Rated current (B)	15A
Rated current (D)	10A

### Electrical parameters IEC

Rated voltage	320V
Rated current	20A

Rated current(III/2)	320V
Rated surge voltage(III/2)	4KV

#### Item properties

Connection direction	90°
Type of installation	PCB welding
Pin arrangement	Single row in a straight line
Pitch	5mm
Number of potentials	6
Pluggable or not	Yes
Number of rows	1

#### Material data

Environmental items	Compliant with REACH/RoHS
Contact material	copper
Contact zone metal surface	tin-plated
Insulation Materials	PA66
Insulating material group	I
Flammability rating	UL94V-0

#### Mechanical tests

Test Specification	IEC61984/ UL1059
--------------------	------------------

#### Environmental data

Ambient temperature (operation)	-40°C~105°C
---------------------------------	-------------

#### Accessories

##### Tool

Screwdriver	/
-------------	---

Operating tool	/
----------------	---

Accessories

Coding strip	/
Bridge	/
Marking strip	/
Others	2EDG-PWP-01H

Business data

Order number	10030002306
Packing unit	1100
Minimum order quantity	30
Products weight (without packaging)	2.36