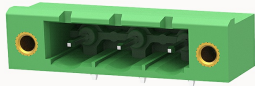


Overview

Product information



2EDGRM-7.62-10030002036

Pluggable terminal blocks, Rated current: 20A, Rated voltage (III/2) : 400V, pitch: 7.62mm, Color: green, Contact surface : Tin

Product advantages

- Universal installation method to ensure a high degree of flexibility in device design
- The plug direction is parallel to the PCB

Product certification



Technical data

Product drawing

3D model

□

Processing notes

Process

Wave soldering/manual soldering

Electrical parameters UL

Rated voltage (B)	300V
Rated voltage (D)	300V
Rated current (B)	15A
Rated current (D)	10A

Electrical parameters IEC

Rated voltage	400V
Rated current	20A

Rated current(III/2)	400V
Rated surge voltage(III/2)	4KV

Item properties

Connection direction	0°
Type of installation	PCB welding
Pin arrangement	Single row in a straight line
Pitch	7.62mm
Number of potentials	3
Pluggable or not	Yes
Number of rows	1

Material data

Environmental items	Compliant with REACH/RoHS
Contact material	copper
Contact zone metal surface	tin-plated
Insulation Materials	PA66
Insulating material group	I
Flammability rating	UL94V-0

Mechanical tests

Test Specification	IEC61984/ UL1059
--------------------	------------------

Environmental data

Ambient temperature (operation)	-40°C~105°C
---------------------------------	-------------

Accessories

Tool

Screwdriver	/
-------------	---

Operating tool	/
----------------	---

Accessories

Coding strip	/
Bridge	/
Marking strip	/
Others	2EDG-PWP-01H

Business data

Order number	10030002036
Packing unit	100
Minimum order quantity	30
Products weight (without packaging)	2.79