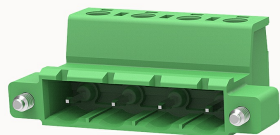


Overview

Product information



2EDGKRM-7.62-10010004379

Pluggable terminal blocks, Rated current: 20A. Rated voltage (III/2) : 400V, pitch: 7.62mm, Color: green, Contact surface : Tin

Product advantages

- Adapt to multi-type plugs, device design is highly flexible
- Keying parts can be installed
- Universal installation method, suitable for various situations

Product certification



Technical data

Product drawing

3D model

□

Connection capacity

Conductor cross section solid	0.2~2.5mm ²
Conductor cross section flexible	0.2~2.5mm ²
AWG	28~12AWG
Strip length	7mm

Electrical parameters UL

Rated voltage (B)	300V
Rated voltage (D)	300V
Rated current (B)	15A
Rated current (D)	10A

Electrical parameters IEC

Rated voltage	400V
Rated current	20A
Rated current(III/2)	400V
Rated surge voltage(III/2)	4KV

Item properties

Connection direction	0°
Pin arrangement	Single row in a straight line
Connection method	Screw connection
Screwdriver	Slotted screwdriver
screw thread	M3
Pitch	7.62mm
Number of potentials	4
Pluggable or not	Yes
Number of rows	1

Material data

Environmental items	Compliant with REACH/RoHS
Contact material	copper
Contact point metal surface	tin-plated
Contact zone metal surface	tin-plated
Insulation Materials	PA66
Insulating material group	I
Flammability rating	UL94V-0

Mechanical tests

Test Specification	IEC61984/ UL1059
--------------------	------------------

Environmental data

Ambient temperature (operation)

-40°C~105°C

Accessories

Tool

Screwdriver

0.6x3.5, Slotted screwdriver

Operating tool

/

Accessories

Coding strip

2EDG-PWP

Bridge

/

Marking strip

/

Others

/

Business data

Order number

10010004379

Packing unit

390

Minimum order quantity

30

Products weight (without packaging)

8.75