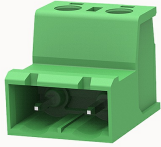


## Overview

## Product information

**2EDGKR-7.62-10010002768**

Pluggable terminal blocks, Rated current: 20A, Rated voltage (III/2) : 400V, pitch: 7.62mm, Color: green, Contact surface : Tin

## Product advantages

- Adapt to multi-type plugs, device design is highly flexible
- Keying parts can be installed
- Universal installation method, suitable for various situations

## Product certification



## Technical data

## Product drawing

## 3D model

□

## Connection capacity

Conductor cross section solid	0.2~2.5mm <sup>2</sup>
Conductor cross section flexible	0.2~2.5mm <sup>2</sup>
AWG	28~12AWG
Strip length	7mm

## Electrical parameters UL

Rated voltage (B)	300V
Rated voltage (D)	300V
Rated current (B)	15A
Rated current (D)	10A

## Electrical parameters IEC

Rated voltage	630V
Rated current	20A
Rated current(III/2)	630V
Rated surge voltage(III/2)	6KV

## Item properties

Connection direction	0°
Pin arrangement	Single row in a straight line
Connection method	Screw connection
Screwdriver	Slotted screwdriver
screw thread	M3
Pitch	7.62mm
Number of potentials	2
Pluggable or not	Yes
Number of rows	1

## Material data

Environmental items	Compliant with REACH/RoHS
Contact material	copper
Contact point metal surface	tin-plated
Contact zone metal surface	tin-plated
Insulation Materials	PA66
Insulating material group	I
Flammability rating	UL94V-0

## Mechanical tests

Test Specification	IEC61984/ UL1059
--------------------	------------------

#### Environmental data

Ambient temperature (operation)

-40°C~105°C

#### Accessories

##### Tool

Screwdriver

0.6x3.5, Slotted screwdriver

Operating tool

/

##### Accessories

Coding strip

2EDG-PWP

Bridge

/

Marking strip

/

Others

/

#### Business data

Order number

10010002768

Packing unit

200

Minimum order quantity

30

Products weight (without packaging)

3.95