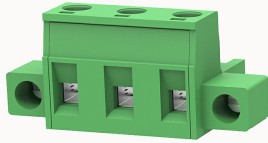


Overview

Product information

**2EDGKM-7.62-10010002716**

Pluggable terminal blocks, Rated current: 20A. Rated voltage (III/2) : 400V, pitch: 7.62mm, Color: green, Contact surface : Tin

Product advantages

- Adapt to multi-type sockets, device design is highly flexible
- Keying parts can be installed
- Universal installation method, suitable for various situations

Product certification



Technical data

Product drawing

3D model

□

Connection capacity

| | |
|----------------------------------|------------------------|
| Conductor cross section solid | 1.0~2.5mm ² |
| Conductor cross section flexible | 1.0~2.5mm ² |
| AWG | 28~12AWG |
| Strip length | 7mm |

Electrical parameters UL

| | |
|-------------------|------|
| Rated voltage (B) | 300V |
| Rated voltage (D) | 300V |
| Rated current (B) | 15A |
| Rated current (D) | 10A |

Electrical parameters IEC

| | |
|----------------------------|------|
| Rated voltage | 400V |
| Rated current | 20A |
| Rated current(III/2) | 400V |
| Rated surge voltage(III/2) | 4KV |

Item properties

| | |
|----------------------|-------------------------------|
| Connection direction | 0° |
| Pin arrangement | Single row in a straight line |
| Connection method | Screw connection |
| Screwdriver | Slotted screwdriver |
| screw thread | M3 |
| Pitch | 7.62mm |
| Number of potentials | 3 |
| Pluggable or not | Yes |
| Number of rows | 1 |

Material data

| | |
|-----------------------------|---------------------------|
| Environmental items | Compliant with REACH/RoHS |
| Contact material | Copper alloy |
| Contact point metal surface | tin-plated |
| Contact zone metal surface | tin-plated |
| Insulation Materials | PA66 |
| Insulating material group | I |
| Flammability rating | UL94V-0 |

Mechanical tests

| | |
|--------------------|------------------|
| Test Specification | IEC61984/ UL1059 |
|--------------------|------------------|

Environmental data

Ambient temperature (operation)

-40°C~105°C

Accessories

Tool

Screwdriver

0.6x3.5, Slotted screwdriver

Operating tool

/

Accessories

Coding strip

2EDG-PWI

Bridge

/

Marking strip

/

Others

/

Business data

Order number

10010002716

Packing unit

100

Minimum order quantity

30

Products weight (without packaging)

6.75