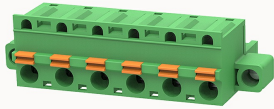


## Overview

### Product information



## 2EDGKDM-7.62-10020002003

Pluggable terminal blocks, Rated current: 20A, Rated voltage (III/2) : 400V, pitch: 7.62mm, Color: green, Contact surface : Tin

### Product advantages

- Adapt to multi-type sockets, device design is highly flexible
- Keying requirements can be met
- Universal installation method, suitable for various situations

### Product certification



## Technical data

### Product drawing

### 3D model

□

### Connection capacity

Conductor cross section solid	0.2~2.5mm <sup>2</sup>
Conductor cross section flexible	0.2~2.5mm <sup>2</sup>
AWG	26~12AWG
Torque	0.4N.m
Strip length	10mm

### Electrical parameters UL

Rated voltage (B)	300V
Rated voltage (D)	300V
Rated current (B)	10A

Rated current (D)	10A
-------------------	-----

#### Electrical parameters IEC

Rated voltage	400V
Rated current(III/3)	400V
Rated current	20A
Rated current(III/2)	400V
Rated current(II/2)	1000V
Rated surge voltage(III/3)	4KV
Rated surge voltage(III/2)	4KV
Rated surge voltage(II/2)	6KV

#### Item properties

Connection direction	0°
Connection method	Push-in spring connection
Screwdriver	Slotted screwdriver
screw thread	M2.5
Pitch	7.62mm
Number of potentials	6
Pluggable or not	Yes
Number of rows	1

#### Material data

Environmental items	Compliant with REACH/RoHS
Contact material	Copper alloy
Contact point metal surface	tin-plated
Contact zone metal surface	tin-plated
Insulation Materials	PA66

Insulating material group	I
Flammability rating	UL94V-0

Mechanical tests

Test Specification	IEC61984/ UL1059
--------------------	------------------

Environmental data

Ambient temperature (operation)	-40°C~105°C
---------------------------------	-------------

Accessories

Accessories

Coding strip	/
Bridge	/
Marking strip	/
Others	2EDG-PWI

Tool

Operating tool	/
Screwdriver	/

Business data

Order number	10020002003
Packing unit	230
Minimum order quantity	30
Products weight (without packaging)	14.5