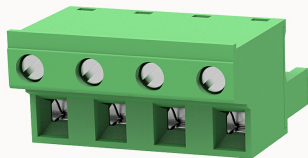


## Overview

### Product information



## 2EDGKC-7.62-10010003606

Pluggable terminal blocks, Rated current: 20A, Rated voltage (III/2) : 400V, pitch: 7.62mm, Color: green, Contact surface : Tin

### Product advantages

- Adapt to multi-type sockets, device design is highly flexible
- Keying requirements can be met
- Universal installation method, suitable for various situations

### Product certification



## Technical data

### Product drawing

### 3D model

□

### Connection capacity

|                                  |                        |
|----------------------------------|------------------------|
| Conductor cross section solid    | 0.2~2.5mm <sup>2</sup> |
| Conductor cross section flexible | 0.2~2.5mm <sup>2</sup> |
| AWG                              | 28~12AWG               |
| Torque                           | 0.5N.m                 |
| Strip length                     | 10mm                   |

### Electrical parameters UL

|                   |      |
|-------------------|------|
| Rated voltage (B) | 300V |
| Rated voltage (C) | 150V |
| Rated voltage (D) | 300V |

|                   |     |
|-------------------|-----|
| Rated current (B) | 15A |
| Rated current (D) | 10A |
| Rated current (C) | 15A |

#### Electrical parameters IEC

|                            |      |
|----------------------------|------|
| Rated voltage              | 400V |
| Rated current              | 20A  |
| Rated current(III/2)       | 400V |
| Rated surge voltage(III/2) | 4KV  |

#### Item properties

|                      |                     |
|----------------------|---------------------|
| Connection direction | 90°                 |
| Connection method    | Screw connection    |
| Screwdriver          | Slotted screwdriver |
| screw thread         | M2.5                |
| Pitch                | 7.62mm              |
| Number of potentials | 4                   |
| Pluggable or not     | Yes                 |
| Number of rows       | 1                   |

#### Material data

|                             |                           |
|-----------------------------|---------------------------|
| Environmental items         | Compliant with REACH/RoHS |
| Contact material            | Copper alloy              |
| Contact point metal surface | tin-plated                |
| Contact zone metal surface  | tin-plated                |
| Insulation Materials        | PA66                      |
| Insulating material group   | I                         |
| Flammability rating         | UL94V-0                   |

### Mechanical tests

Test Specification

IEC61984/ UL1059

### Environmental data

Ambient temperature (operation)

-40°C~105°C

### Accessories

#### Tool

Screwdriver

0.6x3.5, Slotted screwdriver

Operating tool

/

#### Accessories

Coding strip

2EDG-PWI

Bridge

/

Marking strip

/

Others

/

### Business data

Order number

10010003606

Packing unit

350

Minimum order quantity

Products weight (without packaging)

12.929