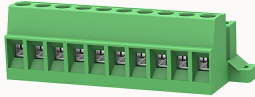


Overview

Product information



2EDG-STD-5.08-10010002832

Pluggable terminal blocks, Rated current: 24A, Rated voltage (III/2) : 250V, pitch: 5.08mm, Color: green, Contact surface : Tin

Product advantages

- Adapt to multi-type plugs, device design is highly flexible
- Keying requirements can be met
- Panel mounting, suitable for various situations

Product certification



Technical data

Product drawing

3D model

□

Processing notes

Process

Wave soldering/manual soldering

Connection capacity

Conductor cross section solid	1.0~2.5mm ²
Conductor cross section flexible	1.0~2.5mm ²
AWG	28~12AWG
Torque	0.6N.m
Strip length	8mm

Electrical parameters UL

Rated voltage (B)	300V
Rated voltage (D)	300V
Rated current (B)	15A
Rated current (D)	10A

Electrical parameters IEC

Rated voltage	250V
Rated current	24A
Rated current(III/2)	250V
Rated surge voltage(III/2)	4KV

Item properties

Connection direction	0°
Connection method	Screw connection
Screwdriver	Slotted screwdriver
screw thread	M3
Pitch	5.08mm
Number of potentials	10
Pluggable or not	Yes
Number of rows	1

Material data

Environmental items	Compliant with REACH/RoHS
Contact material	Copper alloy
Contact point metal surface	tin-plated
Contact zone metal surface	tin-plated
Insulation Materials	PA66
Insulating material group	I

Flammability rating	UL94V-0
---------------------	---------

Mechanical tests

Test Specification	IEC61984/ UL1059
--------------------	------------------

Environmental data

Ambient temperature (operation)	-40°C~105°C
---------------------------------	-------------

Accessories

Tool

Screwdriver	0.6x3.5, Slotted screwdriver
Operating tool	/

Accessories

Coding strip	2EDG-PWI
Bridge	/
Marking strip	/
Others	/

Business data

Order number	10010002832
Packing unit	215
Minimum order quantity	30
Products weight (without packaging)	19.6