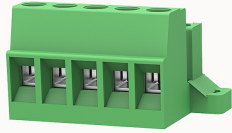


## Overview

### Product information



## 2EDG-STD-5.08-10010002828

Pluggable terminal blocks, Rated current: 24A, Rated voltage (III/2) : 250V, pitch: 5.08mm, Color: green, Contact surface : Tin

### Product advantages

- Adapt to multi-type plugs, device design is highly flexible
- Keying requirements can be met
- Panel mounting, suitable for various situations

### Product certification



## Technical data

### Product drawing

### 3D model

□

### Processing notes

Process

Wave soldering/manual soldering

### Connection capacity

Conductor cross section solid	1.0~2.5mm <sup>2</sup>
Conductor cross section flexible	1.0~2.5mm <sup>2</sup>
AWG	28~12AWG
Torque	0.6N.m
Strip length	8mm

### Electrical parameters UL

Rated voltage (B)	300V
Rated voltage (D)	300V
Rated current (B)	15A
Rated current (D)	10A

#### Electrical parameters IEC

Rated voltage	250V
Rated current	24A
Rated current(III/2)	250V
Rated surge voltage(III/2)	4KV

#### Item properties

Connection direction	0°
Connection method	Screw connection
Screwdriver	Slotted screwdriver
screw thread	M3
Pitch	5.08mm
Number of potentials	5
Pluggable or not	Yes
Number of rows	1

#### Material data

Environmental items	Compliant with REACH/RoHS
Contact material	Copper alloy
Contact point metal surface	tin-plated
Contact zone metal surface	tin-plated
Insulation Materials	PA66
Insulating material group	I

Flammability rating	UL94V-0
---------------------	---------

**Mechanical tests**

Test Specification	IEC61984/ UL1059
--------------------	------------------

**Environmental data**

Ambient temperature (operation)	-40°C~105°C
---------------------------------	-------------

**Accessories**

**Tool**

Screwdriver	0.6x3.5, Slotted screwdriver
Operating tool	/

**Accessories**

Coding strip	2EDG-PWI
Bridge	/
Marking strip	/
Others	/

**Business data**

Order number	10010002828
Packing unit	350
Minimum order quantity	30
Products weight (without packaging)	9.71