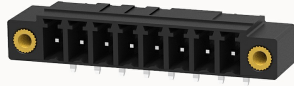


Overview

Product information



15EDGRM-THR-3.5 Reel package-10030004805

Pluggable terminal blocks, Rated current:8A. Rated voltage (II / 2) :250V, pitch:3.5mm, Color:black, Contact surface :Tin

Product advantages

- Suitable for SMT welding process
- The plug direction is parallel to the PCB, Can meet the needs of different connectors

Product certification



Technical data

Product drawing

3D model

□

Processing notes

Process

Reflow soldering/wave soldering/manual soldering

Electrical parameters UL

Rated voltage (B)

300V

Rated current (B)

8A

Electrical parameters IEC

Rated voltage

250V

Rated current

8A

Rated current(II/2)

250V

Rated surge voltage(II/2)

2.5KV

Item properties

Connection direction	0°
Type of installation	PCB welding
Pin arrangement	Single row in a straight line
Pitch	3.5mm
Number of potentials	8
Pluggable or not	Yes
Number of rows	1

Material data

Environmental items	Compliant with REACH/RoHS
Contact material	copper
Contact zone metal surface	tin-plated
Insulation Materials	High temperature resistant materials
Insulating material group	IIIa
Flammability rating	UL94V-0

Mechanical tests

Test Specification	IEC60947/UL1059
--------------------	-----------------

Environmental data

Ambient temperature (operation)	-40°C~130°C
---------------------------------	-------------

Accessories

Tool

Screwdriver	/
Operating tool	/

Accessories

Coding strip	/
Bridge	/
Marking strip	/
Others	/

Business data

Order number	10030004805
Packing unit	470
Minimum order quantity	30
Products weight (without packaging)	2.34