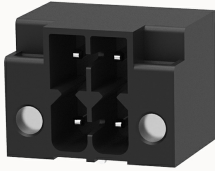


Overview

Product information



15EDGRHCM-THR-3.5-10030000418

Pluggable terminal blocks, Rated current: 9.5A. Rated voltage (III/2) : 250V, pitch: 3.5mm, Color: black, Contact surface : Tin

Product advantages

- Suitable for SMT welding process
- Universal installation method to ensure a high degree of flexibility in device design
- Multi-layer wire connection can achieve higher contact density

Product certification



Technical data

Product drawing

3D model

□

Packaging information

Type of packaging

box-packed

Processing notes

Process

Reflow soldering/wave soldering/manual soldering

Electrical parameters UL

Rated voltage (B)

150V

Rated current (B)

8A

Rated current (C)

8A

Electrical parameters IEC

Rated voltage	250V
Rated current(III/3)	200V
Rated current	9.5A
Rated current(III/2)	250V
Rated current(II/2)	320V
Rated surge voltage(III/3)	2.5KV
Rated surge voltage(III/2)	2.5KV
Rated surge voltage(II/2)	2.5KV

Item properties

Connection direction	0°
Type of installation	PCB welding
Pin arrangement	Double-row in a straight line
Pitch	3.5mm
Number of potentials	4
Pluggable or not	Yes
Number of rows	1

Material data

Environmental items	Compliant with REACH/RoHS
Contact material	copper
Contact point metal surface	tin-plated
Contact zone metal surface	tin-plated
Insulation Materials	High temperature resistant materials
Insulating material group	IIIa
Flammability rating	UL94V-0

Mechanical tests

Test Specification	IEC61984/ UL1059
--------------------	------------------

Environmental data

Ambient temperature (operation)	-40°C~130°C
---------------------------------	-------------

Accessories

Tool

Screwdriver	/
Operating tool	/

Accessories

Coding strip	/
Bridge	/
Marking strip	/
Others	15EDGKNH-PWI

Business data

Order number	10030000418
Packing unit	2310
Minimum order quantity	30
Products weight (without packaging)	1.991341991342