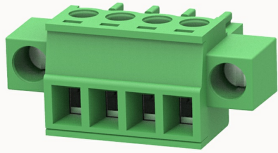


## Overview

## Product information

**15EDGKM-3.5-10010000715**

Pluggable terminal blocks, Rated current: 7A, Rated voltage (II/2) : 250V, pitch: 3.5mm, Color: green, Contact surface : Tin

## Product advantages

- Adapt to multi-type sockets, device design is highly flexible
- Keying requirements can be met
- Universal installation method, suitable for various situations

## Product certification



## Technical data

## Product drawing

## 3D model

□

## Connection capacity

Conductor cross section solid	0.5~1.5mm <sup>2</sup>
Conductor cross section flexible	0.5~1.5mm <sup>2</sup>
AWG	28~16AWG
Torque	0.2N.m
Strip length	7mm

## Electrical parameters UL

Rated voltage (B)	300V
Rated voltage (D)	300V
Rated current (B)	8A

Rated current (D)	8A
-------------------	----

#### Electrical parameters IEC

Rated voltage	250V
Rated current	7A
Rated current(I/2)	250V
Rated surge voltage(I/2)	2.5KV

#### Item properties

Connection direction	0°
Connection method	Screw connection
Screwdriver	Slotted screwdriver
screw thread	M2
Pitch	3.5mm
Number of potentials	4
Pluggable or not	Yes
Number of rows	1

#### Material data

Environmental items	Compliant with REACH/RoHS
Contact material	Copper alloy
Contact zone metal surface	tin-plated
Insulation Materials	PA66
Insulating material group	I
Flammability rating	UL94V-0

#### Mechanical tests

Test Specification	IEC61984/ UL1059
--------------------	------------------

#### Environmental data

Ambient temperature (operation)

-40°C~105°C

#### Accessories

##### Tool

Screwdriver

0.4x2.5,Slotted screwdriver

Operating tool

/

##### Accessories

Coding strip

/

Bridge

/

Marking strip

/

Others

/

#### Business data

Order number

10010000715

Packing unit

200

Minimum order quantity

30

Products weight (without packaging)

3.586