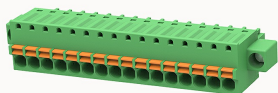


## Overview

### Product information



## 15EDGKDM-3.5-10020000185

Pluggable terminal blocks, Rated current: 12A. Rated voltage (III/2) : 250V, Cross section: 1.5mm<sup>2</sup>, pitch: 3.5mm, Color: green, Contact surface : Tin

### Product advantages

- Adapt to multi-type sockets, device design is highly flexible
- Keying requirements can be met
- Universal installation method, suitable for various situations

### Product certification



## Technical data

### Product drawing

### 3D model

□

### Connection capacity

Conductor cross section solid	0.2~1.5mm <sup>2</sup>
Conductor cross section flexible	0.2~1.5mm <sup>2</sup>
AWG	28~16AWG
Torque	0.4N.m
Strip length	9mm

### Electrical parameters UL

Rated voltage (B)	300V
Rated voltage (C)	300V

Rated voltage (D)	300V
Rated current (B)	8A
Rated current (D)	8A
Rated current (C)	8A

#### Electrical parameters IEC

Rated voltage	250V
Rated current	12A
Rated current(III/2)	250V
Rated surge voltage(III/2)	2.5KV

#### Item properties

Connection direction	0°
Connection method	Push-in spring connection
Pitch	3.5mm
Number of potentials	16
Pluggable or not	Yes
Number of rows	1

#### Material data

Environmental items	Compliant with REACH/RoHS
Contact material	Copper alloy
Contact point metal surface	tin-plated
Contact zone metal surface	tin-plated
Insulation Materials	PA66
Insulating material group	I
Flammability rating	UL94V-0

#### Mechanical tests

Test Specification

IEC61984/ UL1059

Environmental data

Ambient temperature (operation)

-40°C~105°C

Accessories

Business data

Order number

10020000185

Packing unit

235

Minimum order quantity

30

Products weight (without packaging)

14.1852