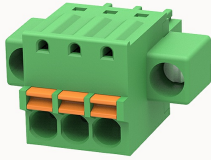


Overview

Product information



15EDGKDM-3.5-10020000173

Pluggable terminal blocks, Rated current: 12A. Rated voltage (III/2) : 250V, Cross section: 1.5mm², pitch: 3.5mm, Color: green, Contact surface : Tin

Product advantages

- Adapt to multi-type sockets, device design is highly flexible
- Keying requirements can be met
- Universal installation method, suitable for various situations

Product certification



Technical data

Product drawing

3D model

□

Connection capacity

Conductor cross section solid	0.2~1.5mm ²
Conductor cross section flexible	0.2~1.5mm ²
AWG	28~16AWG
Torque	0.4N.m
Strip length	9mm

Electrical parameters UL

Rated voltage (B)	300V
Rated voltage (C)	300V

Rated voltage (D)	300V
Rated current (B)	8A
Rated current (D)	8A
Rated current (C)	8A

Electrical parameters IEC

Rated voltage	250V
Rated current	12A
Rated current(III/2)	250V
Rated surge voltage(III/2)	2.5KV

Item properties

Connection direction	0°
Connection method	Push-in spring connection
Pitch	3.5mm
Number of potentials	3
Pluggable or not	Yes
Number of rows	1

Material data

Environmental items	Compliant with REACH/RoHS
Contact material	Copper alloy
Contact point metal surface	tin-plated
Contact zone metal surface	tin-plated
Insulation Materials	PA66
Insulating material group	I
Flammability rating	UL94V-0

Mechanical tests

Test Specification

IEC61984/ UL1059

Environmental data

Ambient temperature (operation)

-40°C~105°C

Accessories

Business data

Order number

10020000173

Packing unit

200

Minimum order quantity

30

Products weight (without packaging)

3.4101