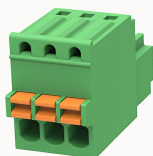


## Overview

### Product information



## 15EDGKD-2.5-10020000065

Pluggable terminal blocks, Rated current: 5A. Rated voltage ( II / 2 ) : 250V, Cross section: 0.5mm<sup>2</sup>, pitch: 2.5mm, Color: green, Contact surface : Tin

### Product advantages

- Adapt to multi-type sockets, device design is highly flexible
- Keying requirements can be met
- Universal installation method, suitable for various situations

### Product certification



## Technical data

### Product drawing

### 3D model

□

### Connection capacity

|                                  |                        |
|----------------------------------|------------------------|
| Conductor cross section solid    | 0.2~0.5mm <sup>2</sup> |
| Conductor cross section flexible | 0.2~0.5mm <sup>2</sup> |
| AWG                              | 26~20AWG               |
| Strip length                     | 8mm                    |

### Electrical parameters UL

|                   |      |
|-------------------|------|
| Rated voltage (B) | 150V |
| Rated voltage (C) | 150V |
| Rated voltage (D) | 150V |

|                   |    |
|-------------------|----|
| Rated current (B) | 4A |
| Rated current (D) | 4A |
| Rated current (C) | 4A |

#### Electrical parameters IEC

|                            |       |
|----------------------------|-------|
| Rated voltage              | 250V  |
| Rated current              | 5A    |
| Rated current(III/2)       | 250V  |
| Rated surge voltage(III/2) | 2.5KV |

#### Item properties

|                      |                           |
|----------------------|---------------------------|
| Connection direction | 0°                        |
| Connection method    | Push-in spring connection |
| Pitch                | 2.5mm                     |
| Number of potentials | 3                         |
| Pluggable or not     | Yes                       |
| Number of rows       | 1                         |

#### Material data

|                             |                           |
|-----------------------------|---------------------------|
| Environmental items         | Compliant with REACH/RoHS |
| Contact material            | Copper alloy              |
| Contact point metal surface | tin-plated                |
| Contact zone metal surface  | tin-plated                |
| Insulation Materials        | PA66                      |
| Insulating material group   | I                         |
| Flammability rating         | UL94V-0                   |

#### Mechanical tests

|                    |                  |
|--------------------|------------------|
| Test Specification | IEC61984/ UL1059 |
|--------------------|------------------|

#### Environmental data

Ambient temperature (operation)

-40°C~105°C

#### Accessories

#### Business data

|                                     |             |
|-------------------------------------|-------------|
| Order number                        | 10020000065 |
| Packing unit                        | 200         |
| Minimum order quantity              | 30          |
| Products weight (without packaging) | 1.8678      |