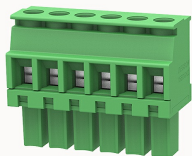


Overview

Product information


15EDGKB-3.5-10010000578

Pluggable terminal blocks, Rated current: 7A, Rated voltage (II/2) : 250V, pitch: 3.5mm, Color: green, Contact surface : Tin

Product advantages

- Adapt to multi-type sockets, device design is highly flexible
- Keying requirements can be met
- Universal installation method, suitable for various situations

Product certification



Technical data

Product drawing

3D model

□

Connection capacity

Conductor cross section solid	0.5~1.5mm ²
Conductor cross section flexible	0.5~1.5mm ²
AWG	28~16AWG
Torque	0.2N.m
Strip length	7mm

Electrical parameters UL

Rated voltage (B)	300V
Rated voltage (D)	300V
Rated current (B)	8A

Rated current (D)	8A
-------------------	----

Electrical parameters IEC

Rated voltage	250V
Rated current	7A
Rated current(II/2)	250V
Rated surge voltage(II/2)	2.5KV

Item properties

Connection direction	90°
Connection method	Screw connection
Screwdriver	Slotted screwdriver
screw thread	M2
Pitch	3.5mm
Number of potentials	6
Pluggable or not	Yes
Number of rows	1

Material data

Environmental items	Compliant with REACH/RoHS
Contact material	Copper alloy
Contact point metal surface	Nickel plating
Contact zone metal surface	tin-plated
Insulation Materials	PA66
Insulating material group	I
Flammability rating	UL94V-0

Mechanical tests

Test Specification	IEC61984/ UL1059
--------------------	------------------

Environmental data

Ambient temperature (operation)

-40°C~105°C

Accessories

Tool

Screwdriver

0.4x2.5,Slotted screwdriver

Operating tool

/

Accessories

Coding strip

/

Bridge

/

Marking strip

/

Others

/

Business data

Order number

10010000578

Packing unit

100

Minimum order quantity

30

Products weight (without packaging)

4.71