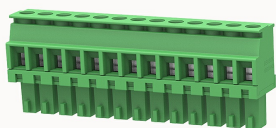


## Overview

### Product information



**15EDGKA-3.5-10010000433**

Pluggable terminal blocks, Rated current: 7A, Rated voltage (II/2) : 250V, pitch: 3.5mm, Color: green, Contact surface : Tin

### Product advantages

- Adapt to multi-type sockets, device design is highly flexible
- Keying requirements can be met
- Universal installation method, suitable for various situations

### Product certification



## Technical data

### Product drawing

### 3D model

□

### Connection capacity

|                                  |                        |
|----------------------------------|------------------------|
| Conductor cross section solid    | 0.5~1.5mm <sup>2</sup> |
| Conductor cross section flexible | 0.5~1.5mm <sup>2</sup> |
| AWG                              | 28~16AWG               |
| Torque                           | 0.2N.m                 |
| Strip length                     | 7mm                    |

### Electrical parameters UL

|                   |      |
|-------------------|------|
| Rated voltage (B) | 300V |
| Rated voltage (D) | 300V |
| Rated current (B) | 8A   |

|                   |    |
|-------------------|----|
| Rated current (D) | 8A |
|-------------------|----|

#### Electrical parameters IEC

|                           |       |
|---------------------------|-------|
| Rated voltage             | 250V  |
| Rated current             | 7A    |
| Rated current(II/2)       | 250V  |
| Rated surge voltage(II/2) | 2.5KV |

#### Item properties

|                      |                     |
|----------------------|---------------------|
| Connection direction | 90°                 |
| Connection method    | Screw connection    |
| Screwdriver          | Slotted screwdriver |
| screw thread         | M2                  |
| Pitch                | 3.5mm               |
| Number of potentials | 13                  |
| Pluggable or not     | Yes                 |
| Number of rows       | 1                   |

#### Material data

|                             |                           |
|-----------------------------|---------------------------|
| Environmental items         | Compliant with REACH/RoHS |
| Contact material            | Copper alloy              |
| Contact point metal surface | Nickel plating            |
| Contact zone metal surface  | tin-plated                |
| Insulation Materials        | PA66                      |
| Insulating material group   | I                         |
| Flammability rating         | UL94V-0                   |

#### Mechanical tests

|                    |                  |
|--------------------|------------------|
| Test Specification | IEC61984/ UL1059 |
|--------------------|------------------|

### Environmental data

Ambient temperature (operation)

-40°C~105°C

### Accessories

#### Tool

Screwdriver

0.4x2.5,Slotted screwdriver

Operating tool

/

#### Accessories

Coding strip

/

Bridge

/

Marking strip

/

Others

/

### Business data

Order number

10010000433

Packing unit

520

Minimum order quantity

30

Products weight (without packaging)

10.11