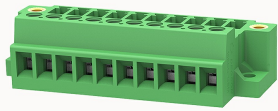


Overview

Product information



15EDG-GBM-3.81-10010000008

Pluggable terminal blocks, Rated current: 7A, Rated voltage (III/2) : 250V, pitch: 3.81mm, Color: green, Contact surface : Tin

Product advantages

- Adapt to multi-type plugs, device design is highly flexible
- Keying parts can be installed
- Universal installation method, suitable for various situations

Product certification



Technical data

Product drawing

3D model

□

Connection capacity

Conductor cross section solid	0.2~1.5mm ²
Conductor cross section flexible	0.2~1.5mm ²
AWG	30~14AWG
Torque	0.2N.m
Strip length	6mm

Electrical parameters UL

Rated voltage (B)	300V
Rated current (B)	8A

Electrical parameters IEC

Rated voltage	250V
Rated current	7A
Rated current(III/2)	250V
Rated surge voltage(III/2)	2.5KV

Item properties

Connection direction	0°
Connection method	Screw connection
Screwdriver	Slotted screwdriver
screw thread	M2
Pitch	3.5mm
Number of potentials	10
Pluggable or not	Yes
Number of rows	1

Material data

Environmental items	Compliant with REACH/RoHS
Contact material	copper
Contact zone metal surface	tin-plated
Insulation Materials	PA66
Insulating material group	I
Flammability rating	UL94V-0

Mechanical tests

Test Specification	IEC61984/ UL1059
--------------------	------------------

Environmental data

Ambient temperature (operation)	-40°C~105°C
---------------------------------	-------------

Accessories

Tool

Screwdriver	0.4x2.5,Slotted screwdriver
Operating tool	/

Accessories

Coding strip	15EDG-PWI
Bridge	DG032-3.81
Marking strip	/
Others	/

Business data

Order number	10010000008
Packing unit	350
Minimum order quantity	30
Products weight (without packaging)	12.5